

AdoreSoftphone™

For



Windows Mobile™

User Manual

www.adoreinfotech.com

© Copyright 2010 Adore Infotech Pvt Ltd. All Rights Reserved



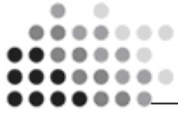




© Copyright 2010 Adore Infotech Pvt Ltd. All Rights Reserved

Adore Softphone is a registered trademark. No part of this User's Manual Guide may be copied, altered, or transferred to, any other media without written explicit concern from Adore Infotech Pvt. Ltd. All brand or product names appearing herein are trademarks or registered trademarks of their respective holders.

Adore Infotech has developed this user manual guide to the best of its knowledge, but does not guarantee that the program will meet all requirements of the user. No warranty is made in regard to specifications or features. Adore InfoTech retains the right to make alterations to the contents of this user manual guide without the obligation to inform third parties.



1. Welcome to AdoreSoftphone

- 1.1 - About AdoreSoftphone for Windows Mobile
- 1.2 - Features
- 1.3 - Adore Softphone panel and User Features

2. Installations and Setup

- 2.1 - Account Information
- 2.2 - System Requirements
- 2.3 - Install Application
 - 2.3.1- Process to download & Install in windows mobile Device
 - 2.3.2- Process to download in PC & Install in windows mobile Device

3. Uninstall Adore Softphone from Windows Mobile

4. Using Adore Softphone

- 4.1- Register AdoreSoftphone
- 4.2 - Placing a Call
- 4.3 - Ending a Call
- 4.4 - Handling an Incoming Call

5. Using Recent Call

6. Exit AdoreSoftphone



1. Welcome to Adore Softphone

1.1 - Adore Softphone for Windows Mobile

AdoreSoftphone for Windows Mobile is Softphone that allows you to speak over Internet with Windows Mobile to any conventional landline and mobile phones. It supports SIP industry standards, and is fully inter-operable with most major Internet Telephone service provider (ITSP) and VOIP software and hardware. Adore Softphone comes with an intuitive Graphical User Interface and can be easily customized with Company logo. It's designed with SIP technology that can be used to make outbound phone calls from Windows Mobile to any telephone.

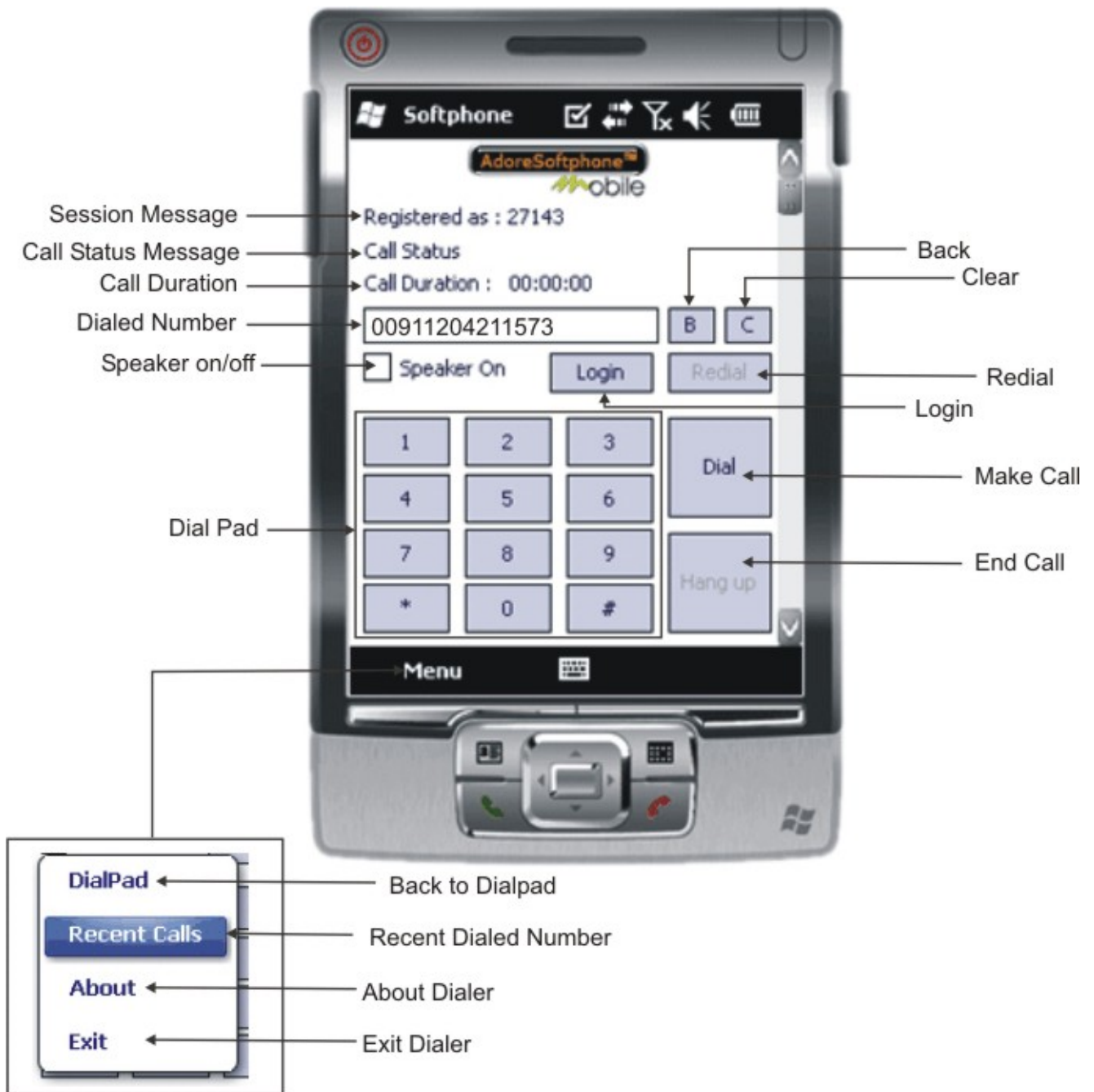
1.2 - Features

- Customized with company logo/name
- Unlimited user license
- SIP protocol support
- Making and receiving calls
- Codec's supported: g711,GSM
- Call timer
- Display Call history
- Local signaling (Dial tone, busy, ring back, etc.)
- Redial
- Touch Tone
- Silence Suppression
- Echo Cancellation
- Registration Timeout

These features would enable you to connect your Windows Mobile Softphone to any Phone and enjoy the slashed rates in comparison to traditional phone call.



1.3 - Adore Softphone panel and User Features





2. Installations and Setup

2.1 Account Information

After choosing a VoIP service provider, you will need the following information

- ✓ SIP IP/Domain
- ✓ User name
- ✓ Password

2.2 System Requirements

OS Supported : Windows Mobile 6.0/6.1/6.5
CPU : 200 MHz ARM-type CPU,
Memory : 64MB Memory
Space : 1000 KB
Internet Connectivity: Wi-Fi/GPRS/EDGE/3G

2.3. Install Application

Please follow any one of the process (2.3.1 or 2.3.2) to download

2.3.1- Process to download & Install in windows mobile Device

Step 1:

[Download AdoreMobileSoftphone.CAB on your PDA](#)

Open Web Browser (e.g.-Internet Explorer)

Enter URL Address: <http://www.adoresoftphone/wmobile>

Click "Install Now" to Install Softphone

(Ref: Fig.- 1 to 4)

Note: Make sure device is connect with Internet

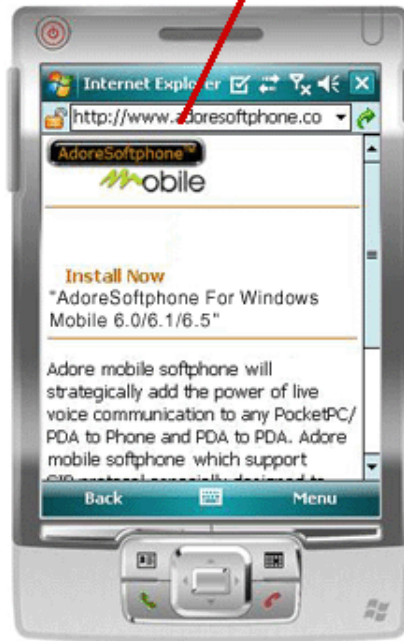
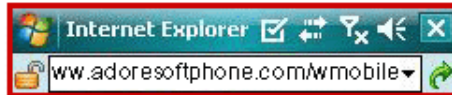


Fig.1



Click & Install

Fig.1.1



Step 2:

*Its automatically start Download AdoreMobileSoftphone.CAB file to your Device
(Ref: Fig.2)*

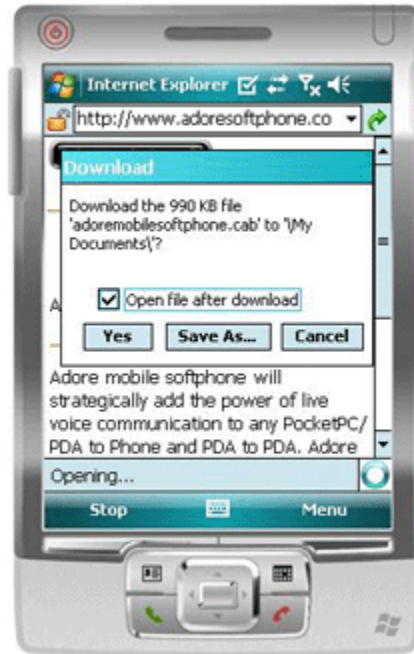


Fig.2

Step 3:

*Now Its automatically Install AdoreMobileSoftphone.CAB file to your Device
(Ref: Fig.3)*

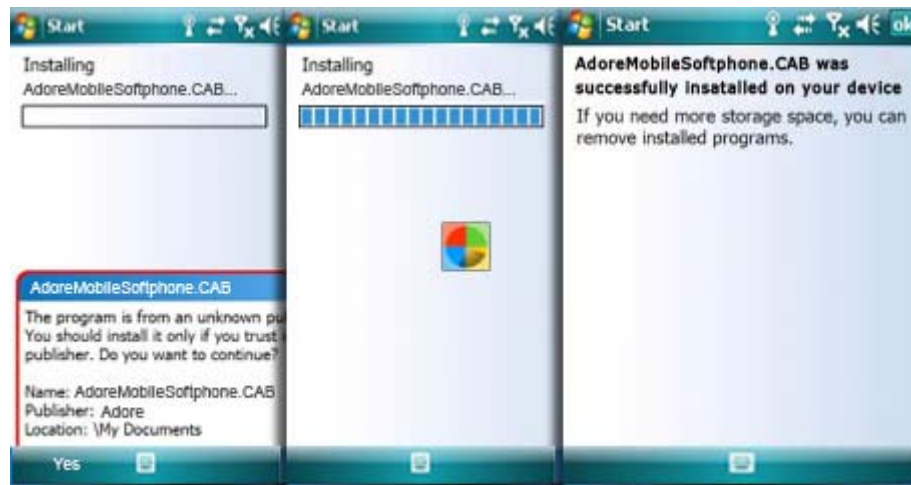
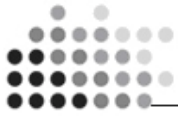


Fig.3



Now AdoreSoftphone has been installed and is ready to use (Ref- Fig.4)

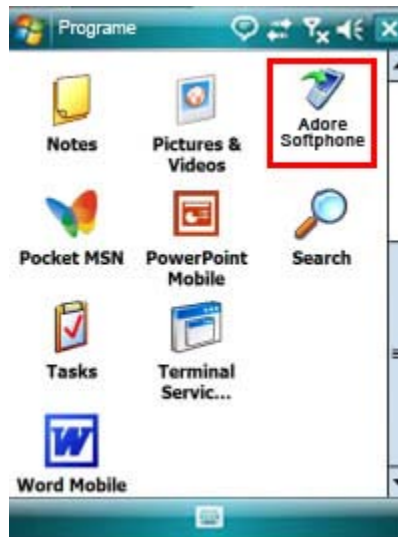


Fig.4

2.3.2- Process to download in PC & Install in windows mobile Device

Step 1:

[Download AdoreMobileSoftphone.CAB on your desktop](#)

Simply Download the [AdoreMobileSoftphone.CAB](#) file to your Desktop, as shown in Figure.5

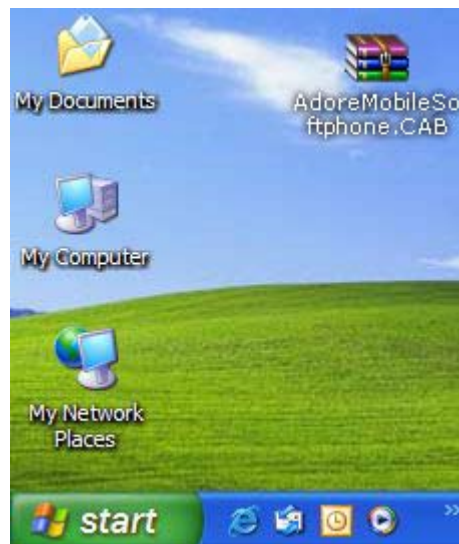


Fig.5

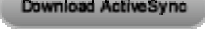


Step 2:

Moving the AdoreMobileSoftphone.CAB File to Your Windows Mobile Device

The file AdoreMobileSoftphone.CAB is located on our desktop.

Note: If Your PC have not Install ActiveSync / Windows Mobile Device Center,

then Download  and Install it.

To begin, connect the Device to your Windows PC using a USB cable or cradle. Allow the synchronization process to complete. Inside ActiveSync, click the Explore button on the toolbar as shown in Figure-6.

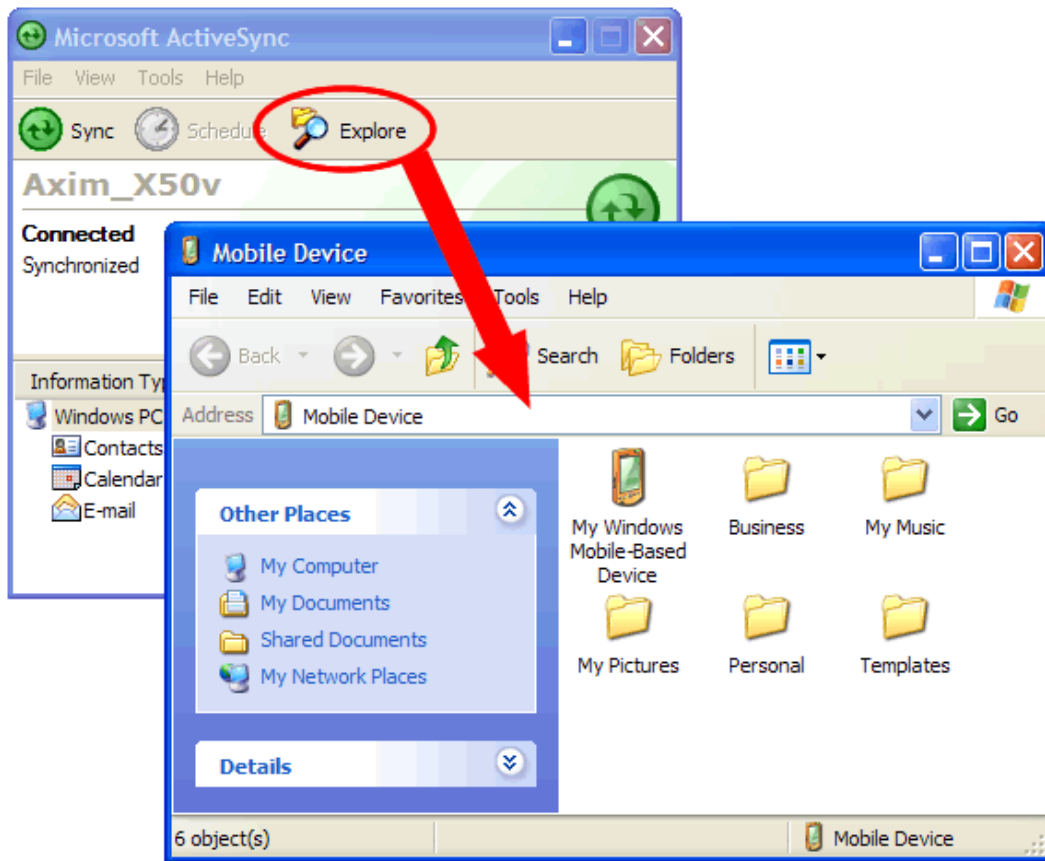


Fig.6

The *Explore* feature of ActiveSync is very useful; it provides access to the files stored on your Pocket PC or smart phone from Windows. With the *Mobile Device* screen open on your desktop, left-click on the [AdoreMobileSoftphone.CAB](#) file and drag it to the Mobile Device screen.

As shown in Figure-7

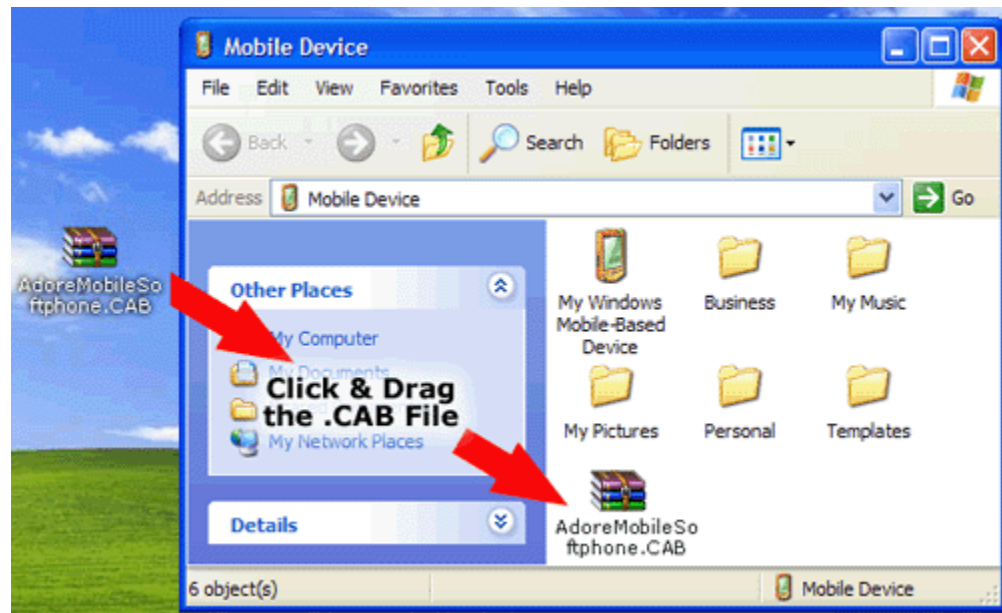


Fig.7

The file has now been transferred to the mobile device.

NOTE: If you copied the file to a subfolder rather than the root "Mobile Device" folder shown above, you'll need to note the AdoreMobileSoftphone.CAB file's folder location for the next step.

Step 3:
Install the "Adore Mobile Softphone"

Now that the [AdoreMobileSoftphone.CAB](#) file has been copied to your Windows Mobile device, we're ready to install the program. In windows mobile device Click *Start > Programs > File Explorer*. If you have followed the instructions above and moved the file to the root *Mobile Device* window, navigate to the *My Documents* folder, as shown in Figure.8

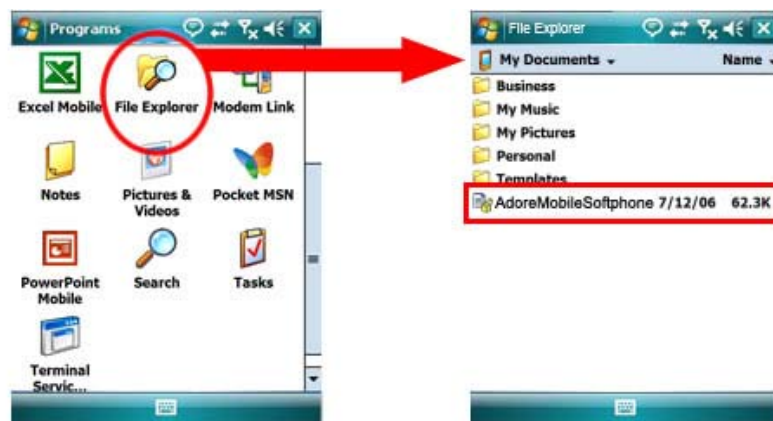


Fig.8



You can see the file you transferred in the *My Documents* folder. When you find it, tap it with your stylus (or, on a smartphone, highlight the file and hit the *OK* key). The AdoreMobileSoftphone.CAB file will begin the installation process. Follow the instructions on screen, as shown in Figure 9

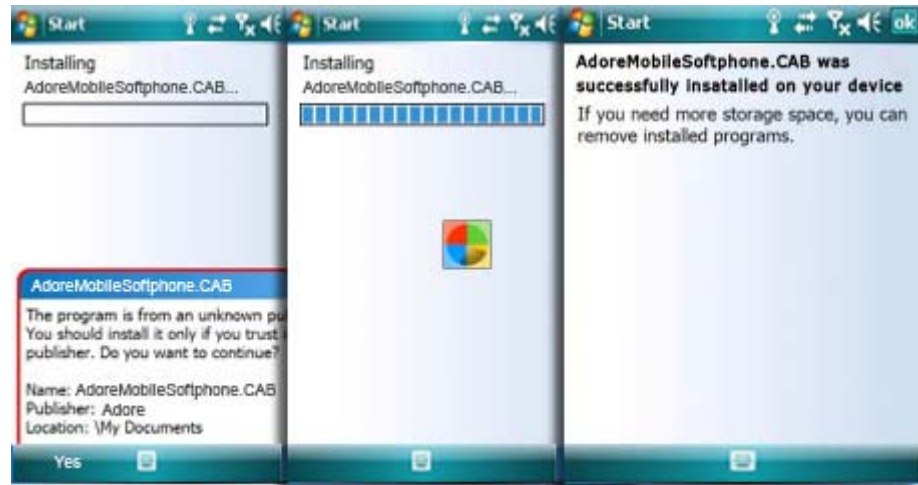


Fig.9

AdoreMobileSoftphone Dialer has now been installed and is ready to use, as shown in Figure.10

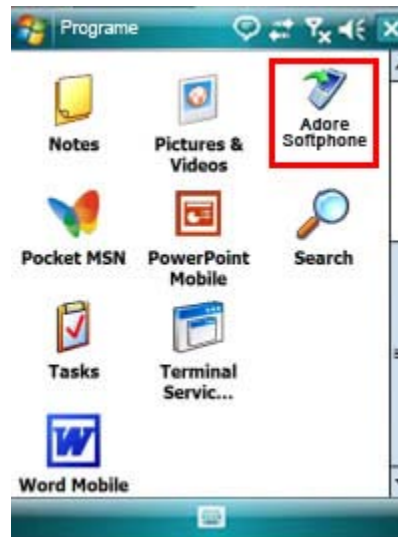


Fig.10

3 - Uninstall Adore Softphone from Windows Mobile

To uninstall AdoreSoftphone from your Windows Mobile Device, go to Start->Settings->System> Remove Program > select Adore Mobile Dialer & Press Remove Button.

4 - Using Adore Softphone

Step 1- Go to Start-> Programs

Step 2 – Select “AdoreSoftphone” to open the application

4.1 Register AdoreSoftphone

1. Login Interface appears

Enter SIP IP, Username and password.
Press Login Button (*Figure-11*)

Note1: If SIP IP is hardcoded / Locked in the Mobile Softphone, user needs to enter only UserName and Password

Note: If you want to remember Login Information Check ‘Save Login information’ checkbox

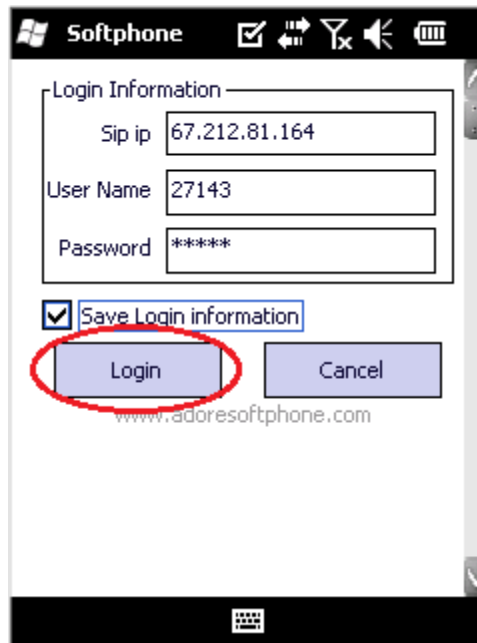


Fig.11

- Softphone Dialpad/Main window open.(With status message “ Registered ”)
As Shown in Figure-12

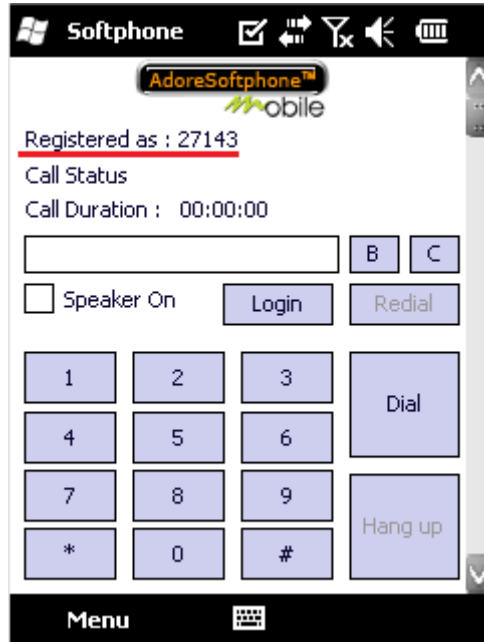


Fig.12

4.2 Placing a Call

You can make a call
To make call

1. Press desired number through Dial Pad
2. Press "Dial" button

When Call is in progress Its display "Ringing at ..." as Shown in Figure.13

When Call is Connected Its display "Connected" as Shown in Figure.13.1



Fig.13

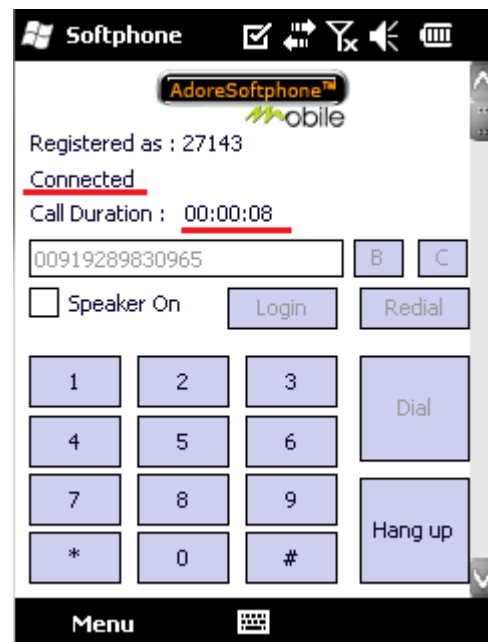


Fig.13.1



4.3 Ending a Call

1. Press "Hang-up" button to ending a call.
2. Session message Display "Disconnected!"

4.4 Handling an Incoming Call

On incoming call message display "Incoming from..." (As shown in Figure.14)
Press "Answer" button to receive or Press "Reject" to reject call
As shown in Fig.14

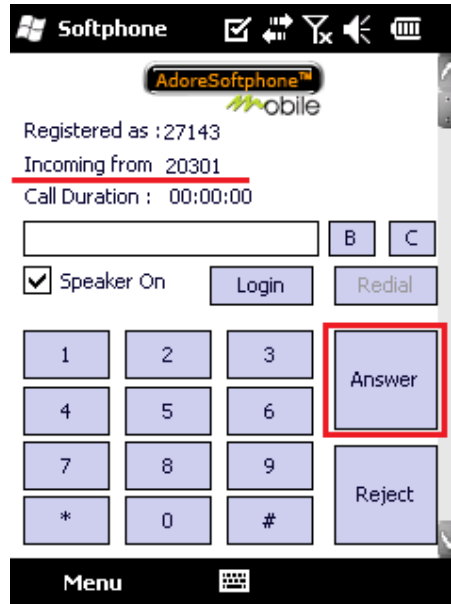


Fig.14

5. Using Recent Call

Select on "Menu" (on the left bottom of the dial pad) > Click on "Recent Call"

By using recent call you can get your call history of last dialed number (As shown in Figure.15)



Fig.15



6. Exit AdoreSoftphone

To Quit AdoreSoftphone

Select on “Menu” (On the left bottom of the dial pad) > Click on “Exit”

As shown in Figure.16



Fig.16



Sales : + 91 - 9958611014 (India)
+ 91 - 120-6471891 (India)
Toll Free : -1-800- 498-6429 (USA)
Email : sales@adoresoftphone.com

Support
Tel : +91 - 120 - 6450129 (India)
Email : support@adoresoftphone.com

